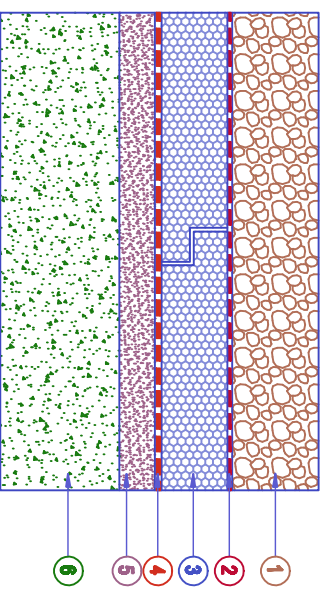


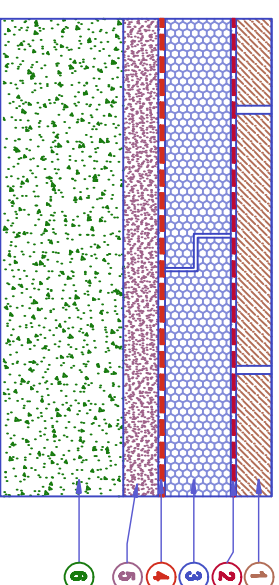
# TYPICAL ROOF INSULATION DETAILS

## 1 - ROOF INSULATION WITH EXTRUDED POLYSTYRENE INVERTED ROOF SYSTEM WITH GRAVEL PROTECTION.



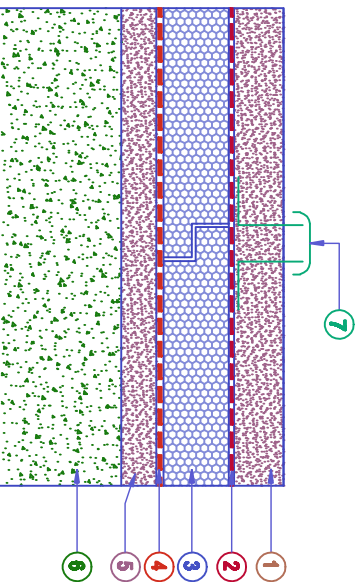
- 1- GRAVEL LAYER 15-30mm (5/8"-1 1/4")
- 2-SEPARATION LAYER(WATER PERMEABLE SYNTHETIC FABRIC)
- 3- EXTRUDED POLYSTYRENE
- 4- WATERPROOFING MEMBRANE
- 5- SCREED TO SLOPE
- 6- ROOF DECK.

## 2 - ROOF INSULATION WITH EXTRUDED POLYSTYRENE INVERTED ROOF SYSTEM WITH CONCRETE PAVERS.



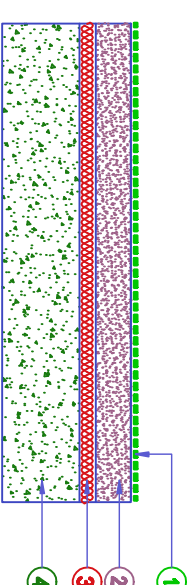
- 1- CONCRETE PAVERS LOOSE LAID
- 2-SEPARATION LAYER(WATER PERMEABLE SYNTHETIC FABRIC)
- 3- EXTRUDED POLYSTYRENE
- 4- WATERPROOFING MEMBRANE
- 5- SCREED TO SLOPE
- 6- ROOF DECK.

## 3 - ROOF INSULATION WITH EXTRUDED POLYSTYRENE INVERTED ROOF SYSTEM WITH CONCRETE SCREED TOP.



- 1- SCREED TO SLOPE
- 2-SEPARATION LAYER(WATER PERMEABLE SYNTHETIC FABRIC)
- 3- EXTRUDED POLYSTYRENE
- 4- WATERPROOFING MEMBRANE
- 5- SCREED TO SLOPE
- 6- CONCRETE ROOF DECK.
- 7- VENT PIPES @ ONE/50sqm OF ROOF AREA.

## 4 - TYPICAL ROOF INSULATION WITH PU FOAM



- 1- WATER PROOF MEMBRANE
- 2- SCREED TO SLOPE
- 3- SPRAYED PU FOAM INSULATION
- 4- ROOF DECK

**NOTE:- BASED ON THE DESIGN OF THE PARTICULAR BLDG, THICKNESS & DENSITY OF DIFFERENT MATERIALS & ROOF DECK TYPE SHOULD BE INDICATED.**