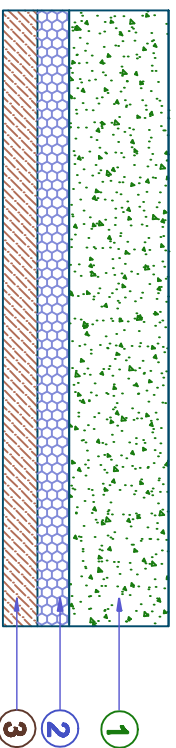


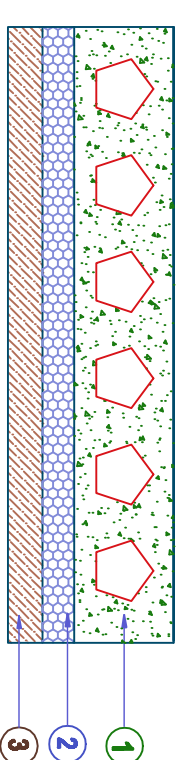
TYPICAL FLOOR SLAB INSULATION OVER / BELOW NON A/C SPACES, CAR PARKS ETC.

1 - CONCRETE SLAB



- 1- CONCRETE FLOOR SLAB
- 2- INSULATION BOARD (POLYSTYRENE OR ROCK WOOL)
- 3- GYPSUM OR PLASTER BOARD

2 - HOLLOW CORE SLAB



- 1- HOLLOW CORE FLOOR SLAB
- 2- INSULATION BOARD (POLYSTYRENE OR ROCK WOOL)
- 3- GYPSUM OR PLASTER BOARD

**NOTE:- BASED ON THE DESIGN OF THE PARTICULAR BLDG, THICKNESS
& DENSITY OF DIFFERENT MATERIALS & ROOF DECK TYPE
SHOULD BE INDICATED.**